



The Pioneer Collective

Tacoma Flex Office Suites

TPC Tacoma
1102 A Street, Suite 300
Tacoma, WA 98402

TPC Tacoma offers 15 turnkey private offices ranging in size for teams of 1-9 people. These furnished office suites come with flexible terms and all of the benefits and amenities of a TPC coworking membership.

All offices have large exterior windows and abundant natural light as well as heating and A/C.

Offices come wired with high speed fiber internet and furnished with custom solid white oak desks, ergonomic task chairs and task lamps. These offices are located inside of the CHS Building, a four-story gorgeous, historic building in the heart of Downtown Tacoma.



Membership Benefits

- On-site staff and Community Manager
- 1 Gb fiber internet & ethernet port options
- Kitchen, lounge space, phone booths, huddle rooms, and bike storage
- Coffee, tea, beverages
- Printing, scanning, fax machine
- 24/7 access w/custom key code
- Business address & mail handling services
- Discounted meeting room rentals
- Hosted VoIP phone lines (\$50 per month)
- Free drop-in days at TPC Seattle locations
- Coworking access around the world with LExC
- Member perks & events

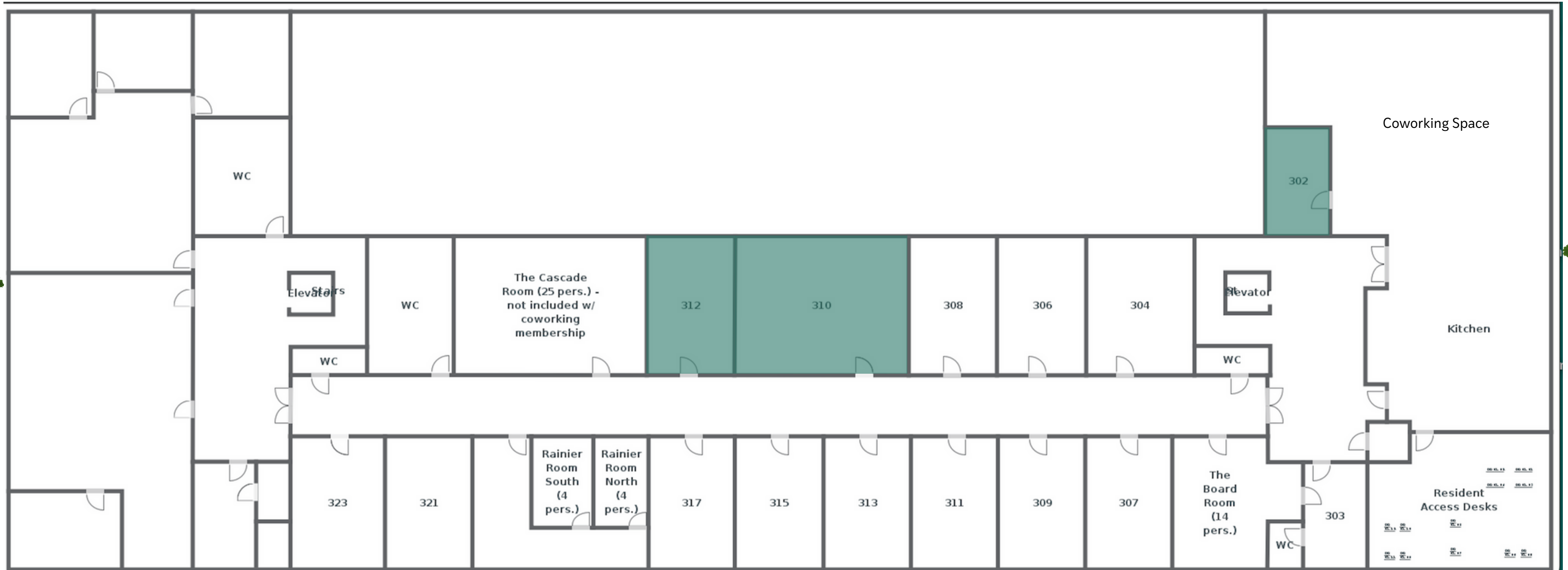




TPC Tacoma communal space, huddle rooms, meeting spaces, offices, phone booths, and kitchen



Floorplan and Available Offices



Office Suite Pricing

Suite #	Seats	Price/mo
302	2	\$1195
303	2	\$1495
304	8	\$2295
306	6	\$1795
307	6	\$1895
308	6	\$1795
309	6	\$1895
310	10	\$2950
311	6	\$1895
312	6	\$1795

Suite #	Seats	Price/mo
313	6	\$1895
315	6	\$1895
<u>317</u>	6	\$1895
321	6	\$1895
323	6	\$1895

A Flexible Package to Reduce Your Cost and Inspire Your Team

We've had the same conversation with customers repeatedly this year. Companies are unsure of when to implement a back to office plan and what their split of hybrid/on-site/and remote usage will be when it hits its steady state. Every employee has settled into a different work routine and it's hard to find a workplace solution that will keep everyone happy.

To address this uncertainty and increase your return on each dollar, we've bundled a generous number of flex memberships with each private office. This will allow your company to offer private touchdown space for power users, but offer the rest of the team workspace as a perk at an affordable cost per employee. WFO employees are happy, the WFH crowd is happy, and your team has space to collaborate in person when necessary.

It's simple. Take the max number of desks included in your private space, and you'll get 1.5x that number of coworking memberships for your team.

Small Offices (1-2 desks) includes up to 3 24/7 coworking memberships

Medium Offices (up to 6 desks) includes up to 9 24/7 coworking memberships

Large Offices (up to 10 desks) includes up to 15 24/7 coworking memberships

Thank you for considering TPC!

For questions or to reserve your suite, email
tacoma@thepioneercollective.com or call (253) 201-4180.